



# Tennis Manawatū

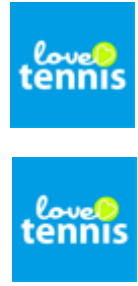
## NEWSLETTER

October 2023



Love Tennis weekend signaled the beginning of the 2023/24 tennis season and what a cracking day had by clubs on the 10<sup>th</sup> of September. TMI (Kurt and Hayley!) travelled around the clubs in the region and saw many new faces on the tennis courts and some great participant numbers. The weather certainly helped with bringing people out to play – here’s hoping we see some new members at local clubs soon! Don’t forget to fill out the feedback form that has been sent out by Tennis Central. It’s important for them to collect information so they can continue on making Love Tennis a successful event.

TMI now have offices based at Vautier Park and are flat mates with Netball Manawatu. We are confident this partnership will give us more opportunity to share the facilities at Vautier Park and some shared sponsorship opportunities. We are also hopeful we may be able to tap into the bar and function area that Netball have set-up – watch this space!



### INTERCLUB

Interclub kicks off on Wednesday, 11<sup>th</sup> October with the Premier league followed by Junior and Senior A & B on Saturday, 14<sup>th</sup> of October. Hoping for a great season and not as much rain as last year!! We need two representatives from each club to join the Whatsapp group to report on weather conditions on Wednesday evenings and Saturday mornings. TMI will be in touch with clubs closer to the time to get this set-up.

An email will be sent out to clubs once the draws are on the website. Make sure you start referring to the TMI website for season information which includes a season calendar and tournament information. TMI will continue building the website as information comes to hand so please use this as a reference. Also, please refer to the TMI facebook page for interclub and tournament updates.



Not a bad view from the new office at Vautier Park!

## TMI BOARD MESSAGE FROM VINCE BAYLIS



Welcome everyone to the beginning of another summer season of tennis in the mighty Manawatu!

I'd like to use this opportunity to introduce the TMI Board members for the 2023/24 season and also a little bit of info on myself, so here we go!

Your 2023/24 season board members are:

Vince Baylis – MLTC (Chairperson)  
 Darryn Street – Marist (Treasurer)  
 Gareth Toland – Te Kawau  
 Kevin Bydder – Feilding  
 Natalie Strickland – MLTC  
 Jono Hurley – Feilding  
 Ed Chronam – Levin  
 Iain Speirs – MLTC  
 Tracey Lee-Lewis – Independent (Legal Counsel)

Apart from Tracey (who the board have co-opted) all the board members are nominated by and voted in by the clubs at the AGM. The core responsibilities of the board are to govern tennis in the Manawatu region. This involves providing oversight and guidance to our operations team (Hayley & Kurt) and setting standards and policies for how the sport is managed in our region. Clubs or individuals can raise ideas, concerns etc. either through their club representative to the board or directly to the Ops team.

Personally, I have been around tennis my whole life, from the toddler sitting courtside watching my parents on a Saturday, through to playing myself all the way from Junior League to Senior Prems and Reps, to now being involved in administration. While procrastinating about what to write I got to thinking what keeps me coming back season after season. It became clear that for me it is all about the people. While I am extremely competitive and love the heat of battle on court, I've had just as much enjoyment on the sidelines and in the clubhouse afterwards with teammates and opposition alike.

Outside of tennis I enjoy spending time with my wife Nic and two boys and our extended family and friends. With my family based in Taranaki and Nic's in Hunterville, throw in trips to the lake or the beach (not to mention tennis tournaments) and we spend almost as many weekends away as at home, but I wouldn't change that for the world.

Throughout all my playing career, there's always been someone in the background providing interclub competitions, tournaments, reps and club events for my benefit. They're often unseen and some people may not even know they exist. For me (and I'm sure many more of the board), my time on the board is about giving back to the sport that has given me so much and ensuring it continues to thrive.

I hope you all have a great season and I'm sure you'll hear from myself (or maybe another board member) again in the next newsletter.

## TENNIS CENTRAL CLUB OF THE YEAR - LEVIN



A special mention has to go to Levin Tennis Club (LTC) for their Tennis Central Club of the year win at the Tennis Central awards in August. This is a massive achievement for Levin and a testament to the hard work and commitment they have made to making LTC an all-inclusive and community based club.

Congrats team. You are leading the way for Manawatu Clubs and we look forward to watching you grow!



## REPRESENTATIVE TENNIS

The senior representative tennis season is fast approaching, and we are looking forward to seeing the best players that each of the central North Island provinces have to offer, pitted against each other in the hugely competitive cauldron of the prestigious Christie Cup challenges!

Each season the likes of Manawatu, Whanganui, Taranaki, Hawkes Bay and Wairarapa compete against one another in a 'Ranfurly Shield' type representative competition, while all of these provinces plus the Wellington regional teams then play off against each other for the Tennis Central interprovincial fixture towards the end of the summer season.

This provides a wonderful opportunity for our best players to test themselves against some of the top players that New Zealand has to offer.

Jono Spring, Natalie Strickland & Kurt McNamara  
**Representative Coordinators**

## INTRODUCING NATALIE STRICKLAND

As some of you may know, I have a long history with the game of tennis starting from a young age. From humble beginnings in Feilding, Manawātū to NZ Reps and then on to more vast experiences abroad in the States and in Europe as a young adult.

When it was time to return home, I began raising my whānau and started a busy teaching career. My love (and competitiveness!) for tennis and its experiences have never waned, therefore I have continued playing on and off for the last few years.

This year and beyond, brings some new experiences such as becoming a Tennis Manawātū BOT member and helping coordinate the Manawātū Senior Rep team. In addition, the time has come as a 'tennis mum', which I'm sure will bring a new dimension to the game.

MLTC have been super-welcoming of my slow ease and return back into the game and I look forward to supporting the region's tennis wherever I see fit.

Ngā mihi,  
 Natalie Strickland



## MESSAGE FROM THE NEW GIRL

It's been a busy first month working for Tennis Manawatu. There is LOTS to learn and get my head around. I'm the first to admit I don't know it all even after being involved in the Tennis world through MLTC for a number of years. I'm taking every opportunity to talk to key people within the tennis community and learn what I can. There is plenty of amazing tennis knowledge out there and certainly some great ideas circulating. Part of my role within TMI is to gather knowledge so TMI can use this to work together with clubs and players to provide great tennis opportunities for everyone in the region. Kurt's tennis knowledge and experience around tournaments, reps and coaching is providing me with a sound understanding of the fundamentals of TMI and I'm excited to work alongside the board and their strategic plan.

Hope you all have a fantastic start to the season with some great tennis being played. Remember to get in touch with either Kurt or I if you have any questions or concerns. As representatives of Tennis in the region, we are only too happy to help.

Hayley Underwood  
**TMI Executive Officer**



Manawatu Masters Tournament, September 1<sup>st</sup> and 2<sup>nd</sup> 2023  
 From left: Andy Martin, Me, Linda Wynks and Tony Cresswell (I'll get you Tony!)

## INCORPORATION SOCIETY CHANGES - UPDATE

You may have heard about the changes to the Incorporated Societies Act that need to be implemented by all incorporated societies by April 2026. If not, you can more information here:

<https://companiesoffice.cmail19.com/t/r-e-tthkaud-bdiikuiit-n/>

At this stage there is no need to panic or to start registering under the new Incorporate Societies act. Tennis New Zealand will be implementing the changes first, then regional and association entities, allowing clubs to be the last in the chain. Tennis New Zealand will share more information as it comes to hand.



TENNIS NEW ZEALAND  
PLAYER PROTECTION. PROGRAMME

The **Tennis Participant Protection Policy (TPPP)** was established in 2018. The purpose of this policy is to protect the health, safety and well-being of everyone who participates in tennis activities. It applies to all tennis organisations, anyone involved in any aspect of tennis, and it operates throughout New Zealand.

Tennis NZ has created safeguarding resources to simplify and bring to life the procedural obligations of NZTEs (New Zealand Tennis Entity's) that relate to safeguarding children and vulnerable adults.

To contribute to a safe and secure tennis environment, Tennis New Zealand **requires all people who have regular contact with children or vulnerable adults (as defined in the policy scope), to undergo a police vetting check.** This relates to, but is not limited, to the following groups of people:

- Club volunteer, club or coach helper, or paid club administrator
- Professional (paid) coach
- Individuals attending a Tennis NZ coaching qualification course
- Umpires or officials
- Tournament organiser or staff (paid or voluntary)
- Region/Association Team Manager
- National/Region/Association/Affiliate staff or representative
- Tennis NZ contractors

**What do we need to do in the Manawatu?** Clubs should have received information about this through Tennis Central, directly from Tennis NZ or more recently from TMI. TMI understands that some clubs are already in the process of gathering the information which is fantastic.

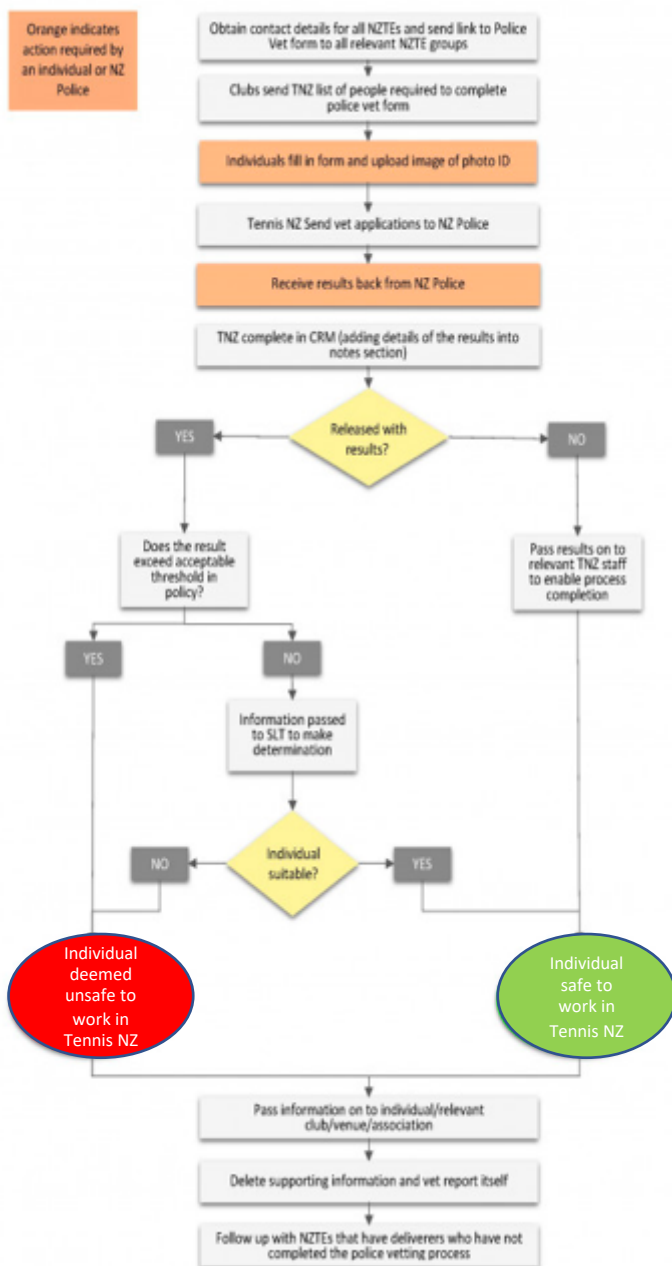
You can find more information about the TPPP on the Tennis NZ website:

<https://tennis.kiwi/clubs/safe/resources/mandatory-obligations-for-tennis-organisations/>

You will also find the police vetting form on the Tennis NZ website:

<https://tennis.kiwi/abouttennisnz/policies-and-reports/police-vetting-policy/>

We understand this adds to club workloads; however, to protect our young and vulnerable players every effort should be made to ensure our players are participating in a safe environment.



# TOURNAMENT UPDATE

It's great to see our locals participating and doing well in other tennis regions. Tennis Manawatu is trying to run local events monthly in the region to help locals get more match play and develop their game without needing to travel so far. Our region has amazing venues and is very central, so we are hoping to grow this area of Tennis Manawatu and attract more players to compete against locals. Make sure you keep an eye on the Tennis Manawatu website for the season calendar and upcoming tournaments.

## Nelson Tournament -

Lara Power - Under 18's Girl's singles and Doubles winner

## Manawatu S Grade Event –

Division 1 Winner - Henry Manktelow

Division 2 Winner - Shane Lahina

Division 3 Winner - Mark Vallance

Division 4 Winner - Sarah Jennings

Division 5 Winner - Henry Hoskins

Green Dot Winner - Isaac Grimestone



Henry Hoskins & Logan McComb

Lara Power

## Whanganui Tournament -

Locals who played in this event - Fraser Waugh, Jamie Waugh, Chieko Okada, Lara Power, Lily Smith, Sarah Jennings, Annabel Giles, Neeve Harbott, Jordan Le Long, Tane north, TJ North, Nizar Veernakutty & Lucy Windley.

### Results -

Lara Power & Lily Smith - Under 14's Girl's doubles runners up

## Wellington Tier 3 -

### Results

Lara Power - Under 14's Singles runner up

Lara Power & Lily Smith - Under 14's Doubles runners up



Karen Broughton & Sarah Jennings



Lee Mackie & Shane Lahina



Lily Smith & Lara Power

# UPCOMING TOURNAMENTS

Tennis Manawatu S Graded Event  
**October 29<sup>th</sup>**

Tennis Manawatu Primary and Intermediate Champs  
**November 8<sup>th</sup>**

Tennis Manawatu Highschool Champs  
**November 9<sup>th</sup>**

Tennis Manawatu S Graded Event  
**December 3<sup>rd</sup>**

## OPERATIONAL ROLES WITHIN TENNIS MANAWATU

It appears there is some confusion and several questions out in the Tennis community about the working roles within Tennis Manawatu and how they may potentially conflict with other roles that Kurt (Tennis Operations Manager) and Hayley (Executive Officer) have within tennis. If you have any concerns about TMI roles and potential conflicts of interest, please get in touch with the TMI Board Chair, Vince Baylis.



**EXECUTIVE OFFICER**  
20 HOURS PER WEEK  
**HAYLEY UNDERWOOD**

### Executive Officer Role:

- To grow the game of tennis in the region through the management of effective programs and competitions
- Ensuring the strategic goals of Tennis Manawatu Inc. are being delivered
- Day-to-day administration and organisational operations of Tennis Manawatu Inc.
- To work with existing tennis clubs in the Manawatu to help them strengthen their capability to provide tennis opportunities (playing and coaching) for people of all backgrounds in their community.
- Secure sufficient funds for TMI to effectively operate

### Potential conflicts of interest:

Current committee member at MLTC and MLTC Senior Interclub coordinator.



**TENNIS OPERATIONS MANAGER**  
22 HOURS PER WEEK  
**KURT MCNAMARA**

### Tennis Operations Manager Role:

- To grow the game of tennis in the region through the management of effective programs and competitions
- To improve the accessibility of grassroots tennis participation opportunities for children and young people in Manawatu schools and communities.
- To increase the number of qualified grassroots coaches actively delivering participation programs in schools, clubs, and communities in the Manawatu region
- To increase the number of children and young people regularly playing and/or coaching tennis in schools, clubs, and community facilities.
- To provide a player progression pathway through ages/stages and abilities to ensure player retention

### Potential conflicts of interest:

Owner operator of Promac Tennis Coaching.

## FACEBOOK— IT’S A TRAGEDY!

TMI have the saddest wee facebook page ☹️ and we’d love to see more people interact with it. As an incentive to get more likes and people on our page, we have some Love Tennis tee-shirts to give away. Like and share the Love Tennis post on the Tennis Manawatu website to be in to win. We’ll draw four winners at the end of October. Everybody loves a tee-shirt – what have you got to lose 😊



PS: This will probably be a sad little competition too, but you’ve got to start somewhere ☹️ Hope you give us points for trying! We’ll run another competition once we’ve got Insta going 😊

## SPONSORS

Many thanks to our generous sponsors who continue to support Tennis Manawatu in it’s endeavors to grow, develop and promote tennis in the region.

We appreciate you!

