



## CLUB FORUM SUMMARY NOTES

---

Tennis Central Region Inc. (TCRI) Club Forum

Date and Time: Tuesday 12 June 2018, 6:00pm

Venue: Renouf Tennis Centre, Brooklyn Road, Brooklyn, Wellington

Attendees: Mel Jansen (TCR), Keith Willet (Johnsonville TC), Peter Browne (Karori United TC), Peter McArthur (Kilbirnie TC).

---

### 1. **Action Points from Previous Forum**

- a. LED Lighting Blog. TCR has created an online discussion blog for LED lighting at clubs. The blog can be found at [www.centralledlights.freeforums.net](http://www.centralledlights.freeforums.net)
  - a. anyone may read the blog without registering however an intending contributor needs to first register on the blog's site.
  - b. Mel had since added the report from the March Forum to the site
  - c. Action: Peter Browne to add blog entry that LEDs must comply with all safety regulations.
- b. First Aid Courses. TCR has booked two courses for coaches and club representatives (especially those working with children) to gain First Aid Certificates. These are scheduled for:
  - a. Wednesday 4 July 7:30am to 3:30pm,
  - b. Sunday 23 September 9am to 5pm.  
Maximum attendees 12, minimum 10. Cost \$100 per participant.
- c. Levy Contra. Mel advised that the matter of the use of levy contras for WRTC courts had been reconsidered but it had been decided that the current policy must remain in place. The levy is interpreted to be applied to provide times for clubs that will not dilute current court revenue. She distributed the procedure reminder document of 11 November 2016 issued by Ian Miller that was sent to Wellington and Kapi Mana club secretaries for the information of and action by clubs. It includes the objectives of the Levy Contra system and the procedures to be followed (attached). Approvals must come in writing (by email) by the nominated person in charge of each club's contra. A timely reminder would be sent out to clubs along with a copy of the policy and Clubs are asked to make their members aware of these to avoid disappointment at Renouf ProShop.
- d. Midweek competitions: Kapi Mana clubs are now on the invite list for Tennis Central midweek competitions. Invitations had already been extended to the Midweek sections of the Kapi Mana clubs to enter teams in the winter competition but no clubs had taken up the offer. TCR would ensure that all WN and Kapi Mana Clubs would be invited moving forward.
- e. Playing in various interclub competitions; under competition rules players were able to play for various clubs over different competitions but not the same competition provided they were a bona fide member of each of the clubs they play for.

## 2. Update from Tennis Central

- a. Coach Forum: Held 7 June, the second Coach Forum was attended by 20 coaches, including two from Manawatu. On-Court high performance session was run by Christophe Lambert and Simon Rea of Tennis NZ and well received. Off-court session covered coaching development opportunities and current tennis in schools landscape in terms of what was currently being delivered and the need for less coaching in schools and more of an accent on 'tennis fun' giving kids a positive first tennis experience. Coaches were very interested in the new ClubSpark and saw value in less administration duties by using it. New Police vetting requirements from TNZ and the RTC were also covered. Coaches were shown fluctuating numbers of members for all TCR clubs and good discussion followed on the need for coaches to work alongside clubs to increase club membership including incentives for coaches and club management options. It was stressed that everyone must take a stake in and be responsible for growing participation.
- b. Tennis NZ Police vetting: Tennis NZ has introduced new Police vetting requirements for coaches involved in delivery of national programmes (Hot Shots, Tennis Xpress, Cardio Tennis), Tennis NZ coach development, or Tennis NZ performance/touring coaching and who have sole or joint responsibility for children. Its purpose is to help create a safe and secure environment for children, young people, and vulnerable members of society. Affected individuals will be need to consent to a Police vetting report and disclosure of the report to Tennis NZ. As part of the process the individual will be required to agree to authorise TNZ to have the right to pass on any 'released with results' reports deemed serious enough to preclude the individual's coaching involvement to any clubs, Associations or Regions that engage the services of the individual.
- c. Club Toolkit: Jenny Fitzmaurice from Tennis New Zealand will be preparing a 'Club Tool Kit' in coming months to assist clubs with administration. The kit is expected to contain examples of a number of documents including constitution, coaching contract, officer job descriptions and more.
- d. New Zealand Community Trust (NZCT) funding: Mel referred to comments made by Kevin Wilson (Karori United) at the recent TNZ Roles and Responsibilities Forum held on 29 May where he pointed out that tennis clubs could be accessing a larger share of community trust funding. Mel therefore urged clubs to seek more funding from NZCT and other sports funding avenues. Mel suggested that clubs use DIA's website: [https://www.dia.govt.nz/diawebsite.nsf/wpg\\_URL/Resource-material-Information-We-Provide-All-Venues-and-Numbers-by-Territorial-AuthorityDistrict](https://www.dia.govt.nz/diawebsite.nsf/wpg_URL/Resource-material-Information-We-Provide-All-Venues-and-Numbers-by-Territorial-AuthorityDistrict) to find all available funding organisations in their local community. Mel also noted that clubs could look to apply for a range of items such as facilities, balls and even affiliation fees. Tim Shannahan will also give a presentation at next Club Forum on the art of applying for grants.
- e. Final Affiliation Numbers; were presented and discussed. Between the 2017 and 2018 returns there was an overall net gain across the region of 18 members which was encouraging given large decreases over many years. Taranaki, Wanganui (small), Manawatu and Wellington areas had shown increases but this was offset to a large extent by decreases in the Hutt Valley, Wairarapa and Kapi Mana. The following graphs were presented to show trends in affiliation numbers by association in the Tennis Central region over the last nine years (38 years in the case of Wellington).

Historical Data source: TCR and WTI annual reports. Compiled for TCR by Peter McArthur, with thanks.

- f. Kilbirnie Tennis Club Presentation: Peter McArthur gave an interesting presentation outlining some of the likely reasons Kilbirnie Tennis Club was able to boost membership by 29% over the last year. The club recently won Tennis Central's Club of the Year title. Key reasons included: successful open days, 104 hours of high quality free coaching for junior members, adult beginner tennis programme, simplified membership registration process, Love Tennis and the use of promotional brochures. Tennis Central will ask Peter to present again as part of the Love Tennis Buzz Nights for the benefit of more clubs.
- g. Thriving Clubs: Mel presented information on how Cricket Scotland is reviving local cricket clubs which was supplied in a Sport Wellington Newsletter. The successful strategy, called Thriving Clubs, seeks to make clubs more vibrant, visible, and viable by expanding club activities from a cricket only focus to a wider community focus. That is, turning clubs into a community hub. Expanded activities included child care, movie nights, dog walking, gala days, making facilities available for community events, family fun days. Mel encouraged tennis clubs to consider similar ideas to help grow their membership base. More information is attached.
- h. Love Tennis Open days: Date set for 8-9 September. Registrations open this week. Prices will be the same as last year. Other regions have also expressed interest in joining the Love Tennis programme.
  - i. Mel advised that given the high cost and likely low effectiveness of newspaper advertising as part of the Love Tennis Weekend, she was keen to set up a small group of interested people to be part of a marketing brainstorm group to find alternative and cost effective approaches to promote the Love Tennis Open Days such as bus advertising (available free); stencils on footpaths outside schools; use of advertising screens in supermarkets, banks and takeaway shops; billboards etc. Invitation to join will be sent out soon.

### 3. New items from clubs

No new items for discussion had been received from clubs but Mel raised two as follows:

- a. Tennis Rangers in Primary Schools: Mel outlined a possible approach for clubs and coaches to promote tennis in schools. Tennis is more likely to be taken up by kids in schools if it is championed and promoted by one of the teachers. Finding such a champion, or Tennis Ranger, could be achieved by a campaign where 'rangers' (Primary school teachers) are identified and provided free tennis equipment and a free family membership at the local club, in exchange for providing a well-defined list of responsibilities to promote tennis within the school and whereby families are encouraged to attend the club. Mel will look into the feasibility of this concept as part of a region-wide campaign.
- b. Rally Against Breast Cancer: Mel highlighted a programme run in seven Nelson clubs to attract new people to tennis. The programme is promoted as fun activity where people can try out tennis while providing funding for Breast

Cancer. Mel will investigate the possibility of being part of this promotion with Tennis Nelson. Likely 2019/20 season.

**4. Any other items for discussion: None**

5. **Next Club Forum:** Saturday 25 August 2018 after the TCR AGM with the final forum having a date change to Tuesday 6<sup>th</sup> November so as not to clash with the TCR Board meeting.

Forum closed at 8.00pm

**Action Points:**

1. Peter Browne to add LED safety regulation compliance to LED Blog
2. Mel to re-send Levy Contra policy to clubs as refresher – clubs asked to circulate to members
3. Tim Shannahan to present at next Forum on the 'Art of Funding'
4. Mel to invite interested parties to join a Love Tennis Marketing Brainstorm group
5. Mel to investigate Tennis Ranger Concept
6. Mel to further investigate "Rally against Breast Cancer" campaign with Tennis Nelson



To: Club Secretaries, Wellington and Kapi Mana

11<sup>th</sup> November 2016

### **Procedure reminder - Renouf Court Bookings using Club Levy-contra**

#### **Clubs Levy-contra value:**

Tennis Central (Finance) email Clubs their invoice for Affiliation Fees at the beginning of the season. The invoice shows the total value of the levy (inclusive of GST) that a Club can use for court hire at the Renouf Tennis Centre for the financial year; 1 May to 30 April.

Note that any unused portion at 30 April is not transferable to the following year.

#### **Objectives of the levy contra usage are:-**

- Offer clubs additional value for their levy paid.
- Do this at times that will protect existing revenue streams i.e. we know when it rains indoor courts become valuable. This includes during scheduled mid-week and interclub.
- Increase the usage of the Renouf Tennis Centre.
- Expose club members to the Centre. (Many have not experienced playing indoors).
- Increase competition entries in Business House to encourage club members to enter.
- Allow the Pro Shop to manage the court usage.
- Simplify administration by dealing with only one contact in each of the clubs.
- Simplify administration by advance booking.
- Encourage a bulk booking during unutilised periods.

#### **Levy-contra uses:**

The Levy value may be used for a Club function, as a reward for volunteers, a contra for suppliers doing some work for the Club or offered to sponsors or for new Business House entries.

#### **What can be booked:**

Days and times available will be at the discretion of the Pro Shop but will generally be at off-peak times. If planning a Club function, please also enquire about the Rodney Callender lounge with MatchPint cafe/bar and our caterers.

#### **Who can book:**

Bookings are to be made by the Club Secretary or their nominated single representative. Club Secretaries, if someone else is nominated from your Club advise their contact details for our records.

#### **How to book:**

All booking requests are to be by email to the PlanitPro Shop ([planitproshop@yahoo.com](mailto:planitproshop@yahoo.com)).

Enquiries:

Pro Shop (Greg/Ryan) phone 3846294 will be administering the levy-contra bookings so please email or phone with any enquiries regarding booking.

Thank you for your continued support.

Yours Sincerely

Ian Miller

Honorary CFO

Tennis Central Inc.

Tennis Central Region Incorporated , 60 Brooklyn Road, Wellington 6011

## Tennis Central Region Club Membership Figures

### Count of Affiliated Members for **2017-2018**

Central Sub-regions # clubs	Adult 35+	Adult 19-34	Junior 12+	Junior u12	2018	Casuals	2017		
<u>Taranaki</u>	25	364	100	185	189	<b>838</b>	311	<b>762</b>	76
<u>Wanganui</u>	1	107	4	4	6	<b>121</b>	81	<b>119</b>	2
<u>Manawatu</u>	10	152	25	140	149	<b>466</b>	80	<b>427</b>	39
<u>Hutt Valley</u>	9	438	47	303	250	<b>1038</b>	435	<b>1108</b>	-70
<u>Wairarapa</u>	8	160	30	13	148	<b>351</b>	211	<b>372</b>	-21
<u>Kapi Mana</u>	10	348	49	199	137	<b>733</b>	261	<b>801</b>	-68
<u>Wellington</u>	18	909	135	651	517	<b>2212</b>	291	<b>2152</b>	60
<b>Region Totals</b>	<b>81</b>	<b>2478</b>	<b>390</b>	<b>1495</b>	<b>1396</b>	<b>5759</b>	<b>1670</b>	<b>5741</b>	<b>18</b>

### Tennis Central Region Club Membership Overview 5 year trend

	2014	2015	2016	2017	2018	
<u>Taranaki</u>	854	838	773	762	838	10.00%
<u>Wanganui</u>	353	363	271	119	121	1.70%
<u>Manawatu</u>	836	734	516	427	466	9.10%
<u>Hutt Valley</u>	1112	1221	1186	1108	1038	-6.30%
<u>Wairarapa</u>	386	479	550	372	351	-5.60%
<u>Kapi Mana</u>	857	805	797	801	733	-8.50%
<u>Wellington</u>	2682	2555	2428	2152	2212	2.80%
<b>Region Totals</b>	<b>7080</b>	<b>6995</b>	<b>6521</b>	<b>5741</b>	<b>5759</b>	0.30%



We invite all ages and genders to join us for a fun, social session and support the Breast Cancer Foundation.

# Rally Against Breast Cancer

Proudly sponsored by **Kelly Bowater TRAVEL**

Wilson Federer Control Racket AND pumper pack to be won at each club!

**Wilson**

20% off your presentation for your club's RCBCT



**Sunday 29<sup>th</sup> October - 10am-11am**

This is the second year we are supporting this valuable fundraiser which strives to support families affected by breast cancer. Join us for a fun workout, at whatever level you wish, with our coaches at your local tennis club. NO NEED TO HAVE EVER PLAYED TENNIS BEFORE.



We invite all ages and genders to join us for a fun, social session to support the Breast Cancer Foundation.

- Early Bird Tickets (until 15th Oct) \$10 p/person
- General Admission \$15.00 p/person
- Mother & Child combo \$25.00
- Business Group of 6+ \$12.00 p/person

Coach	Phone	Email
Ngaine Calder - Hope	027 279 9128	ngaine@caldertennis.co.nz
Ashleigh Calder - Mot	027 859 9329	ash@caldertennis.co.nz
Nick Cotton - Lewis	027 474 9647	nickcotton66@yahoo.com
Kalia Yee 2nd - Richmond	027 829 3306	kaliavee@yahoo.com
Lucyanna Spencer - Waka	027 522 0115	lucy@tennis@gmail.com
Vanessa Wiers - Napua	022 460 8320	vay@vawiers.com
David Lewis - G Bay	027 882 0165	lvwd98@hotmail.co.uk

7 Clubs involved - Hope, Nelson, Richmond, Motueka, Waka, Mapua, Golden Bay.

**Kelly Bowater**  
TRAVEL

Kelly Bowater Travel Broker  
027 339922  
027 370366  
kelly@kellybowatertravel.co.nz  
www.kellybowatertravel.co.nz

I'm proud to be associated with the Breast Cancer Foundation and to support the local Nelson community in this valuable fundraising event. I care for the community as much as I care for my clients and their travel experiences.



# POLICE VETTING POLICY & PROCEDURE

**Tennis New Zealand takes all practicable steps to verify the suitability of individuals wishing to be involved in coach development opportunities, national programme delivery, or engaging directly with Tennis New Zealand as a performance/touring coach or support staff.**

## **POLICY**

To contribute to a safe and secure tennis environment, Tennis New Zealand requires all coaches who engage directly with Tennis New Zealand, and any Tennis New Zealand staff who have sole or joint responsibility for children to undergo a Police vetting check every three years. This relates to, but is not limited to, the following groups of people:

- Formal qualification attendees (Junior Development and Club Professional, High Performance courses)
- National programme deliverer applicants (Tennis Hot Shots, Cardio Tennis, Tennis Xpress)
- All contractors/staff prior to being directly engaged by Tennis New Zealand who have sole or joint responsibility for children (Performance/touring Coaches)

All appointments on; formal qualification courses, national participation programmes or individuals who have sole or joint responsibility for children, are subject to the individual receiving either a 'no result', or a 'released with results' deemed not serious enough to preclude the coach from involvement with Tennis New Zealand. In addition, Tennis New Zealand may undertake further police vetting at any time it considers appropriate, (subject to fresh consent by the individual). If the procedure reports a previously undisclosed incident or behaviour relevant to this policy, the future of the individual's continued involvement with Tennis New Zealand will be reviewed and may, if appropriate, be terminated.

As national programme delivery takes place at clubs/schools/centres, Tennis New Zealand reserves the right to provide the details of any police vet released either 'with results' or 'no results' once obtained to relevant personnel at their delivery location/s and governing Tennis Association or Region.

For the sake of clarity, Tennis New Zealand nor any Regions, Association nor clubs have any obligations under the Vulnerable Children Act 2014.

## **PROCEDURE**

### ***Police vetting checks***

- Tennis New Zealand qualify as an 'approved agency' by the New Zealand Police. This entitles Tennis New Zealand to request a Police vetting check to be carried out on any individual associated with Tennis New Zealand and its activities such as Formal qualification attendees (Junior Development, Club Professional and High Performance courses), National programme deliverer applicants (Tennis Hot Shots, Cardio Tennis, Tennis Xpress), and all contractors/staff directly engaged by Tennis New Zealand who have sole or joint responsibility for children.
- A Police vetting report will provide information regarding any convictions, dates of those convictions, types of offences and the sentence imposed. The report will also advise whether the Police recommend that an individual does not have access to children, young people or vulnerable members of society due to behaviour of a violent or sexual nature (that may not, for whatever reason, have resulted in a conviction).
- Tennis New Zealand require the individual to authorise the request of a Police vetting report by completing the official Consent to Disclose Information form. As part of this process the individual will be required to agree to authorise Tennis New Zealand to have the right to pass on any 'released with results' reports deemed serious enough to preclude the individual's involvement in coach development, participation programme delivery or engaging directly with Tennis New Zealand to any clubs, Associations or Regions that engage the services of the individual.





# POLICE VETTING POLICY & PROCEDURE

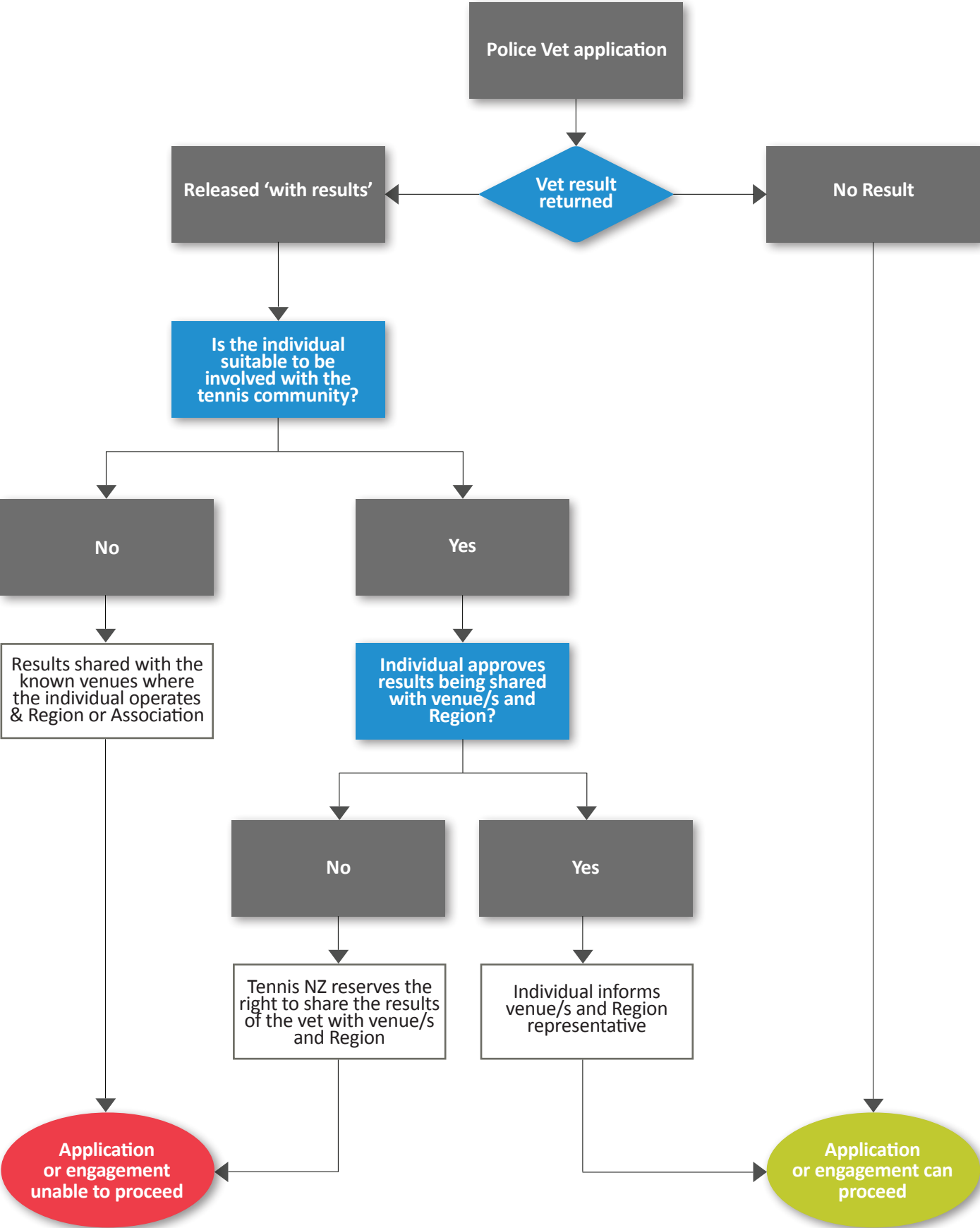
## ***Refusal to consent***

- If the individual does not authorise Tennis New Zealand to obtain a Police vetting report Tennis New Zealand will consider it necessary to reject the application to take part in a coaching qualification course or deliver national participation programmes or terminate an existing delivery agreement.

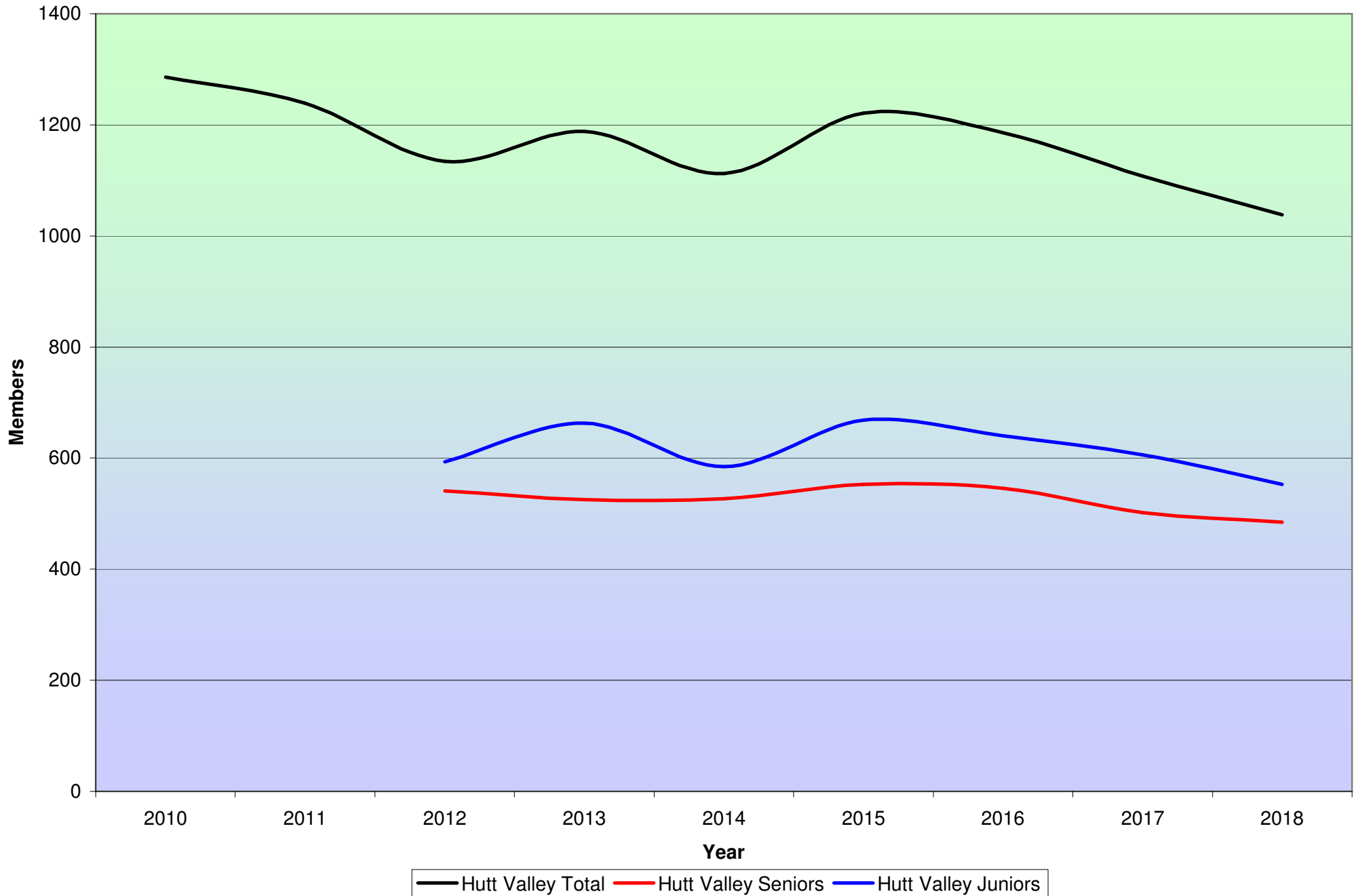
## ***Administration***

- In some cases, it will be necessary to obtain the equivalent of a Police vetting report or a copy of criminal conviction record from another country where the individual concerned has resided.
- The Head of Participation and Coaching is responsible for organising a Police vetting report
- The individual concerned is entitled to request a copy of the Police vetting report obtained by Tennis New Zealand
- The Head of Participation and Coaching will receive and review the Police vetting report. If it is a 'no result' the individual's course application or participation programmes application can continue, or engagement can proceed.
- If the Police vetting report is returned 'released with results' Tennis New Zealand will make a decision regarding the suitability of the individual to be involved with Tennis New Zealand. If Tennis New Zealand already engages the individual they may suspended the individual pending the decision to either cease or continue their involvement with Tennis New Zealand. If the individual is applying to take part in either coach development or National Participation programmes for the first time, their application will be placed on hold pending the decision. When making this decision Tennis New Zealand may consider the following when assessing the results of a vetting report:
  - The offence is listed as one of the 'Specified Offences' as listed in the Vulnerable Children Act
  - The nature of the offence and relevance to involvement with Tennis New Zealand
  - Length of time since the crime was committed
  - Age and maturity now as compared to when the crime was committed, the seriousness of the crime e.g. length of sentence, use of a weapon, the circumstances at the time of violent behaviour
  - Pattern of offending, e.g. a short spate may indicate a 'phase' but a regular pattern may indicate continued inappropriate behaviour
  - Any other factors deemed relevant
- Tennis New Zealand will work in conjunction with the coach to provide the details of any police vet released 'with results' to relevant personnel at their delivery location/s and governing Tennis Association or Region.
- The specifics of the report or record will be kept confidential to the Tennis New Zealand senior leadership team, and any clubs, Associations or Regions that engage the services of the individual.

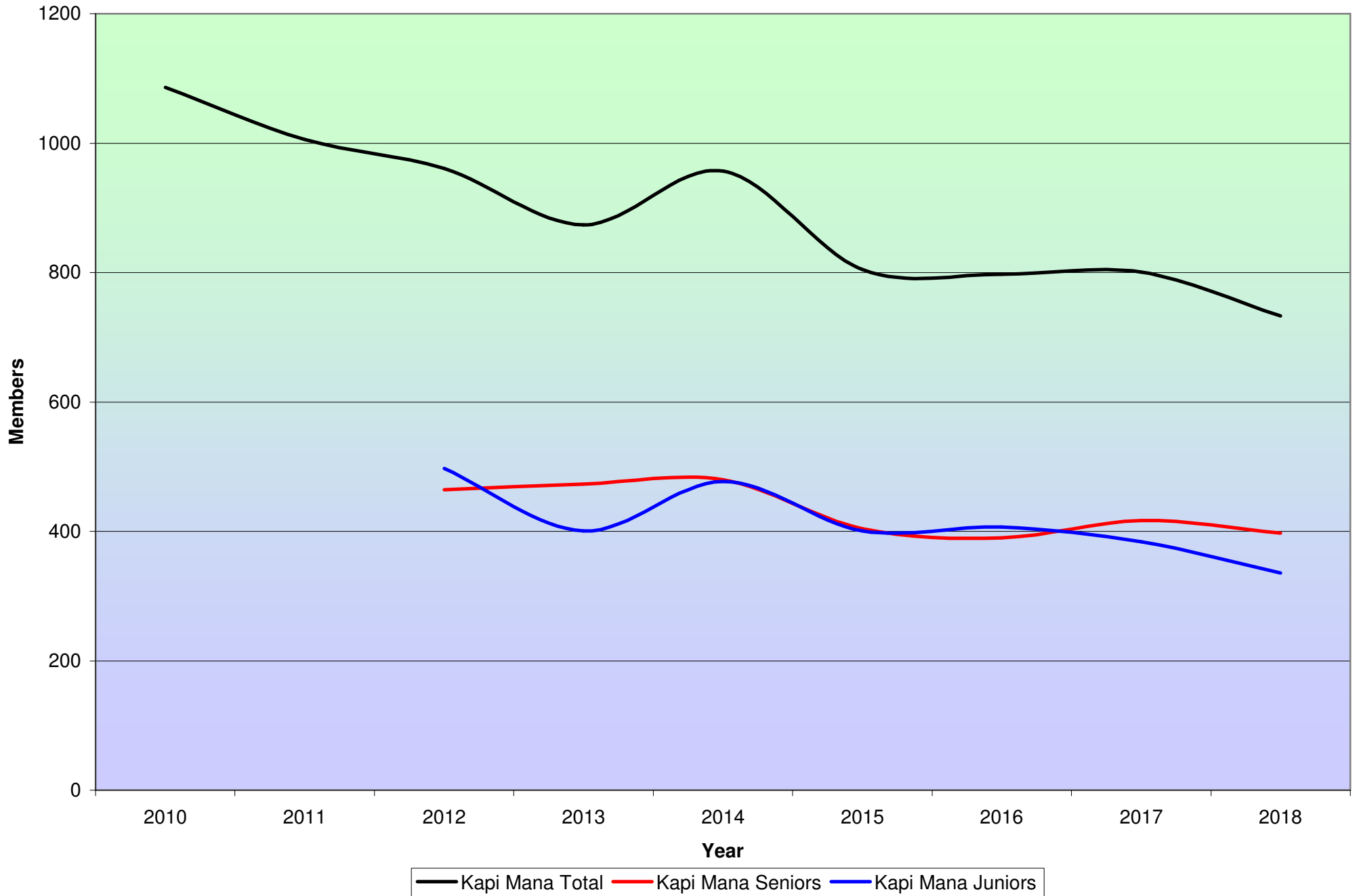
# POLICE VETTING POLICY & PROCEDURE



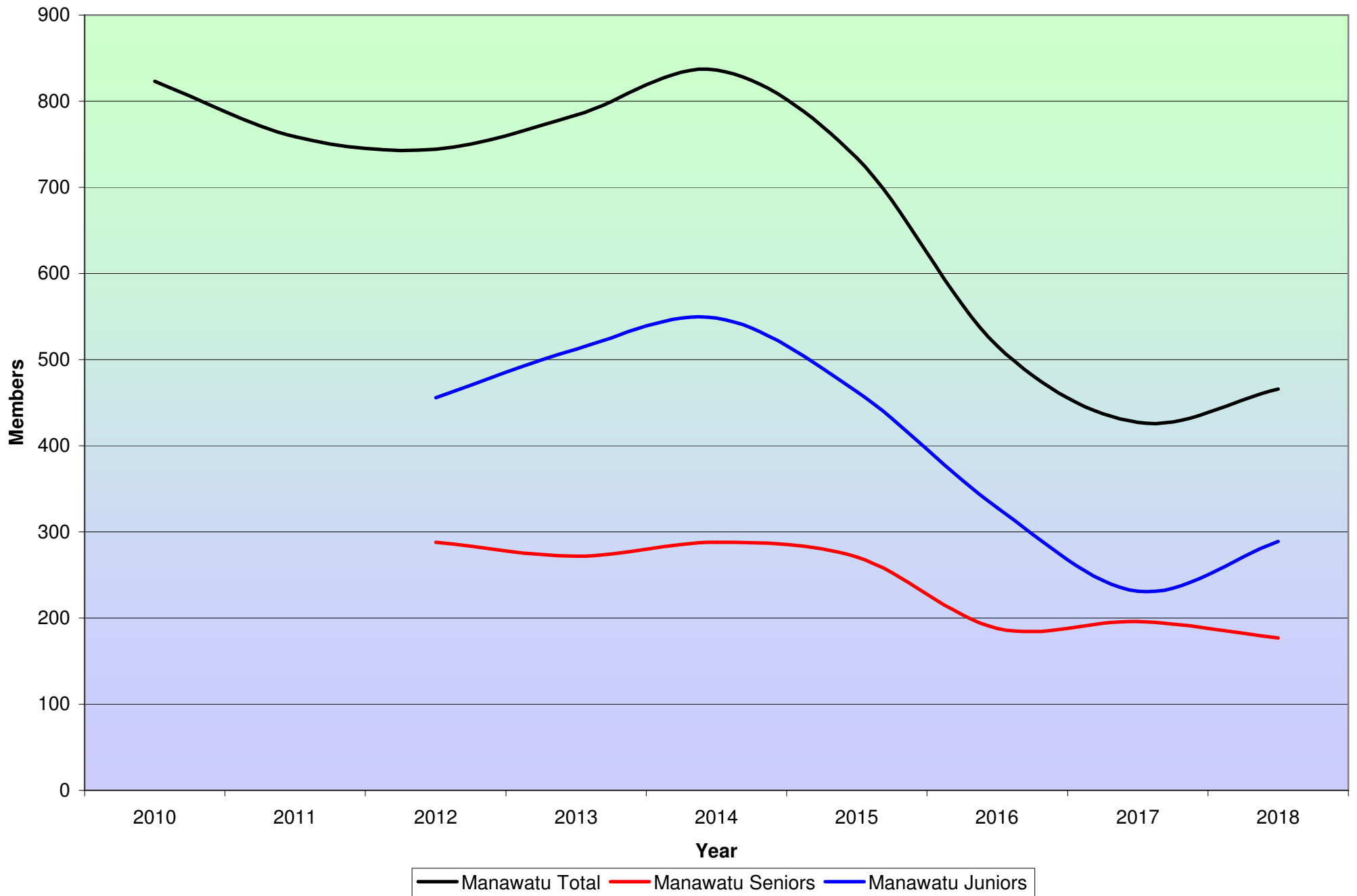
**Total Affiliation - Hutt Valley Tennis Clubs**



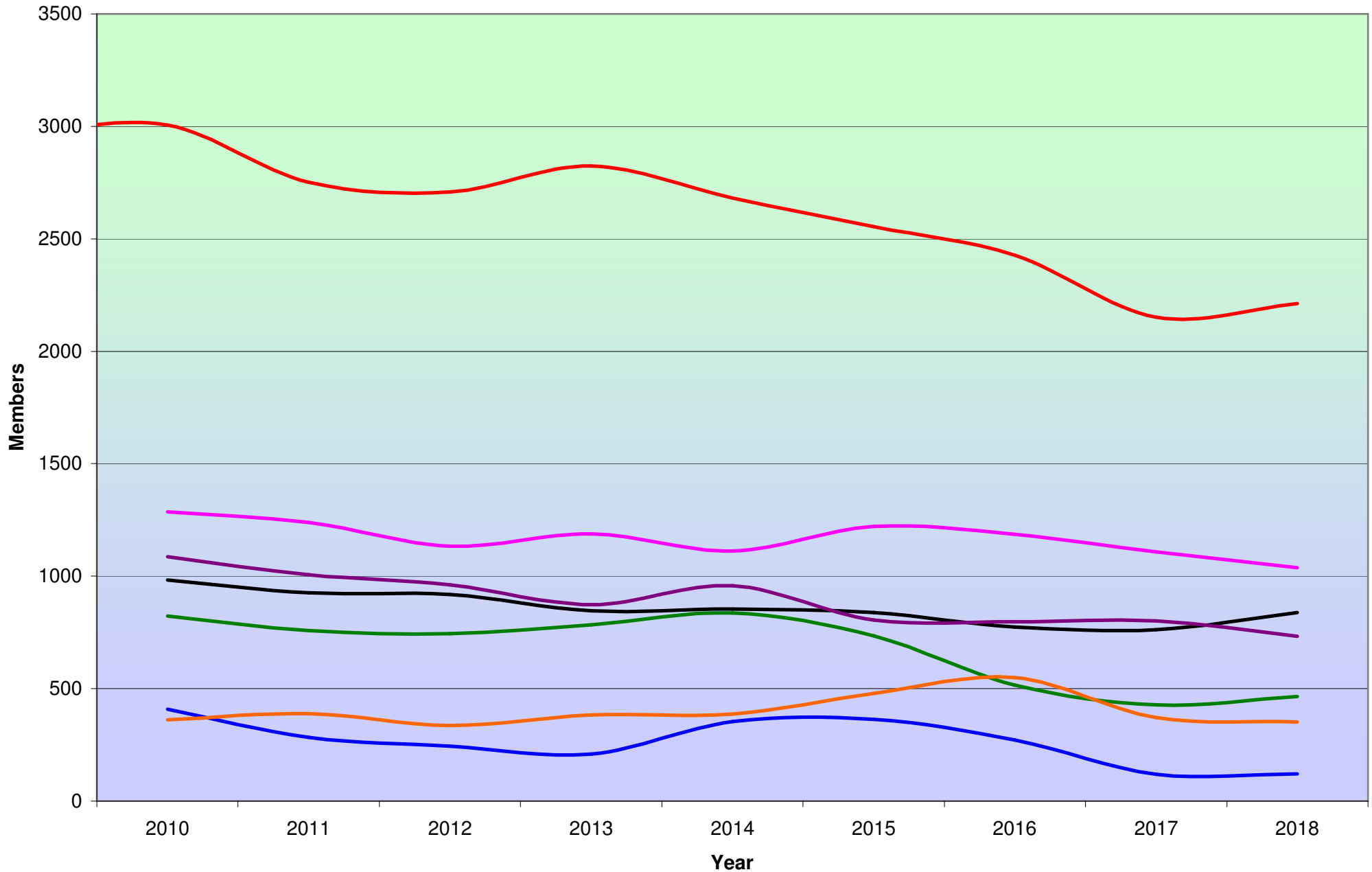
Total Affiliation - Kapi Mana Tennis Clubs



**Total Affiliation - Manawatu Tennis Clubs**

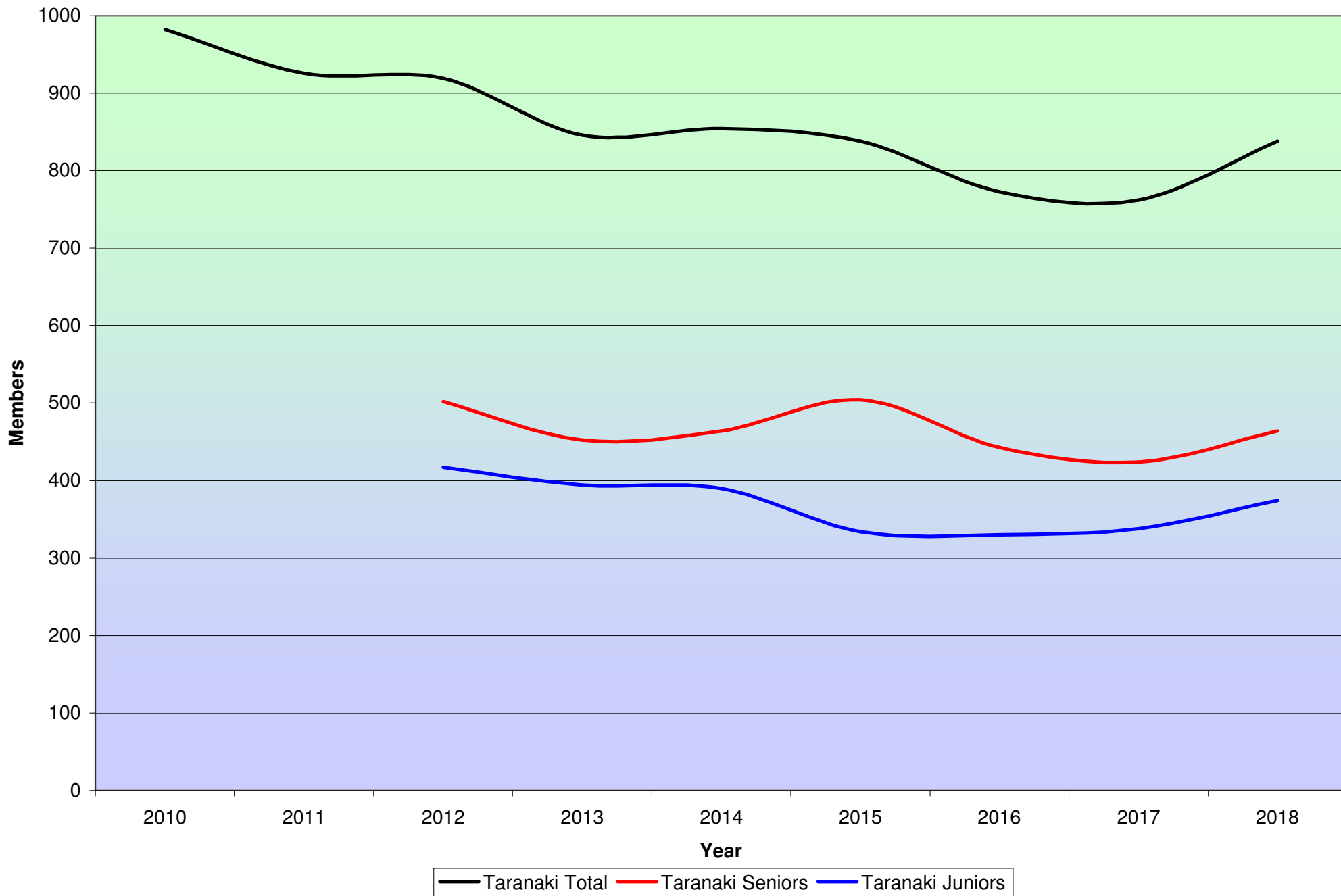


**Total Affiliation - Tennis Central Regions**

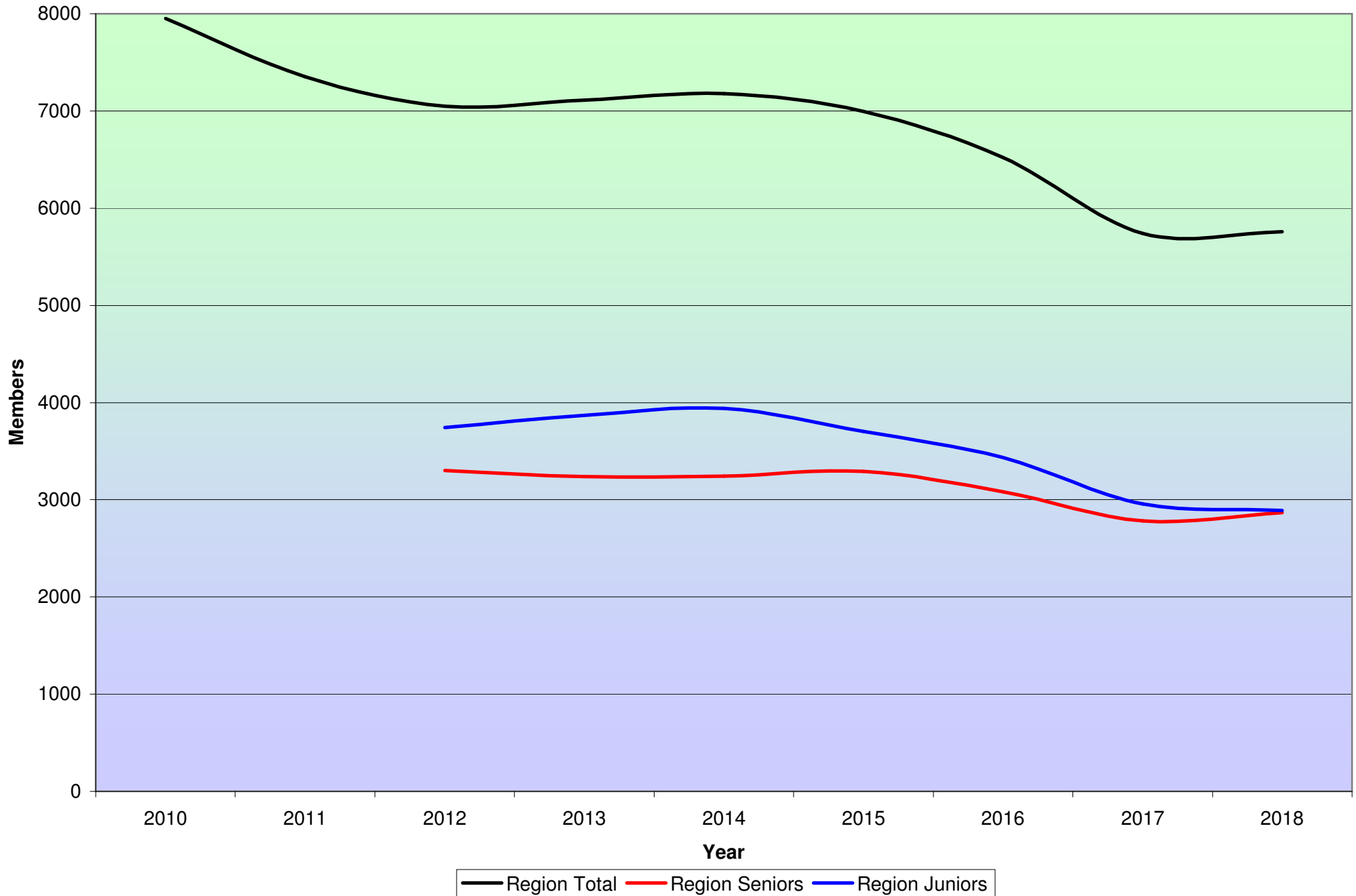


— Taranaki Total — Wanganui Total — Manawatu Total — Hutt Valley Total — Wairarapa Total — Kapi Mana Total — Wellington Total

**Total Affiliation - Taranaki Tennis Clubs**

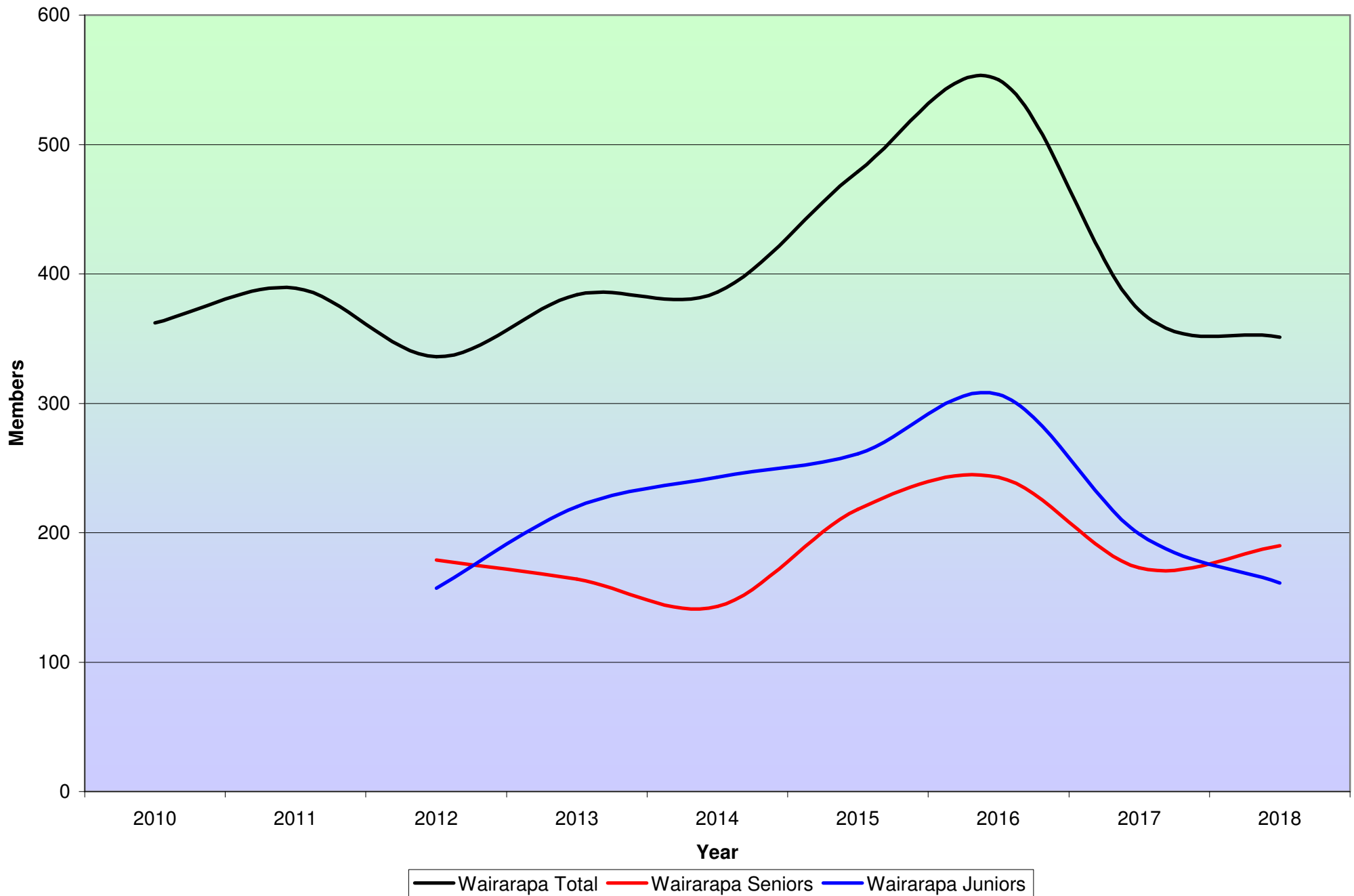


**Total Affiliation - All Tennis Central Region Clubs**

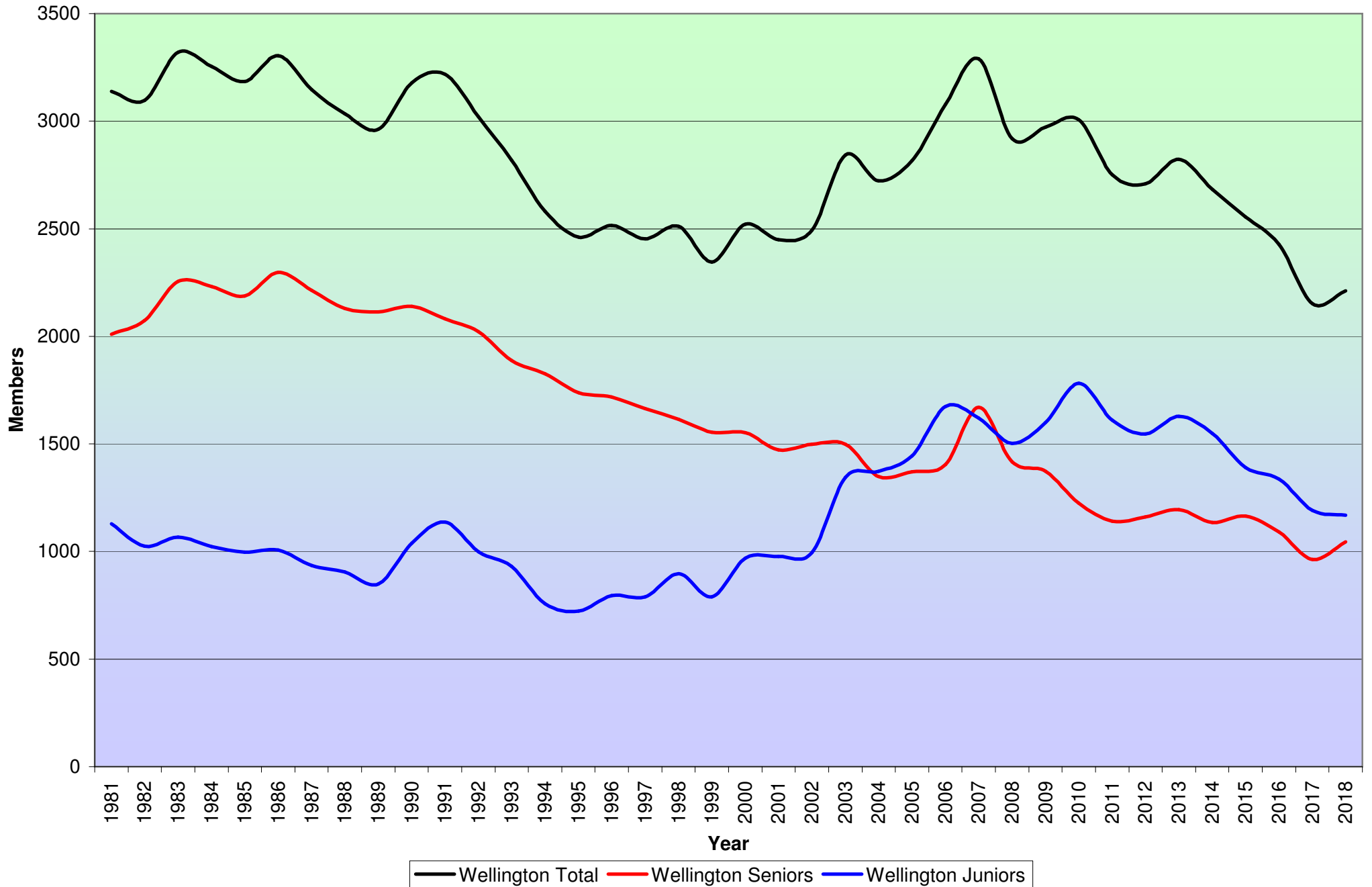




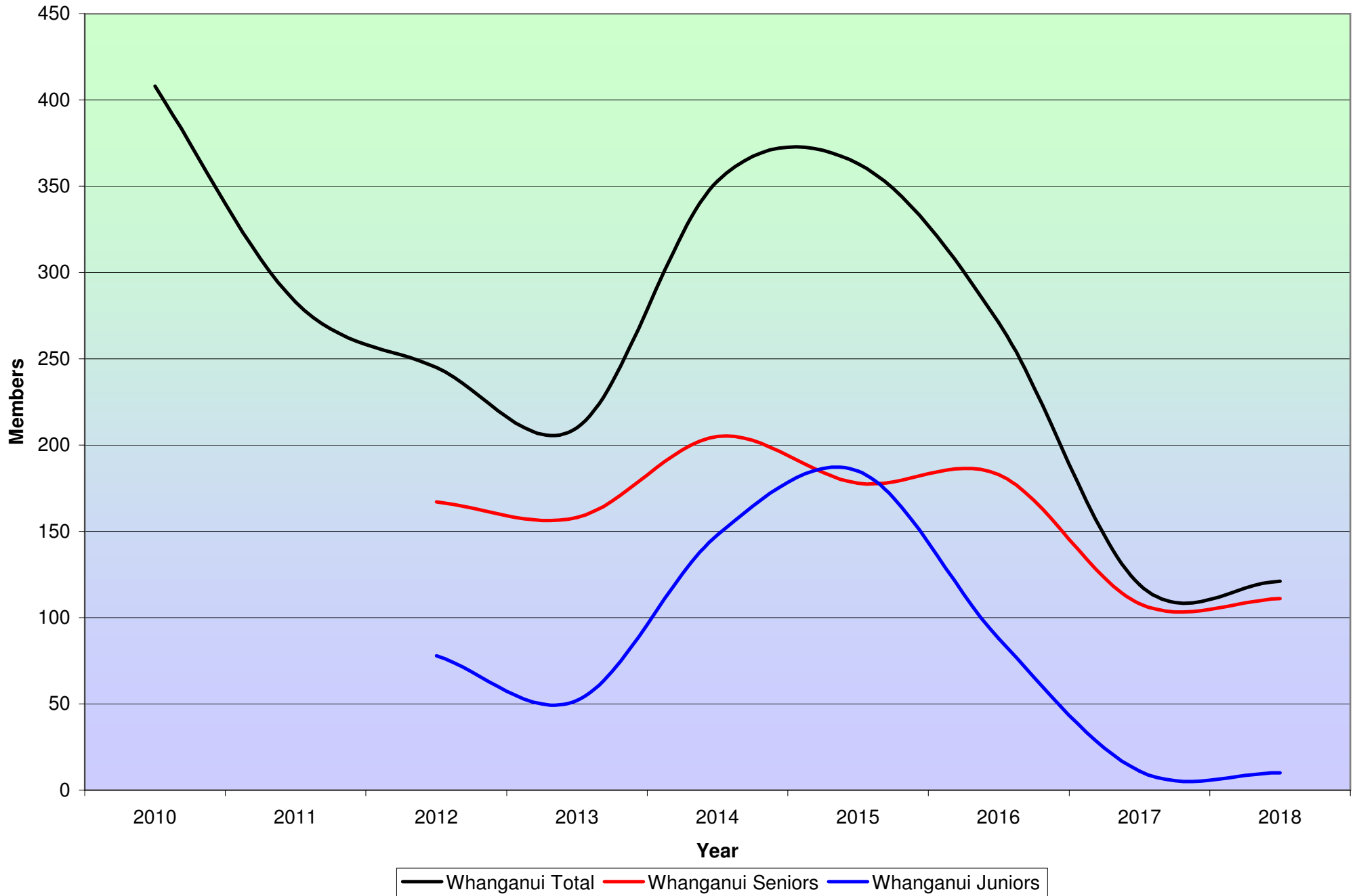
**Total Affiliation - Wairarapa Tennis Clubs**



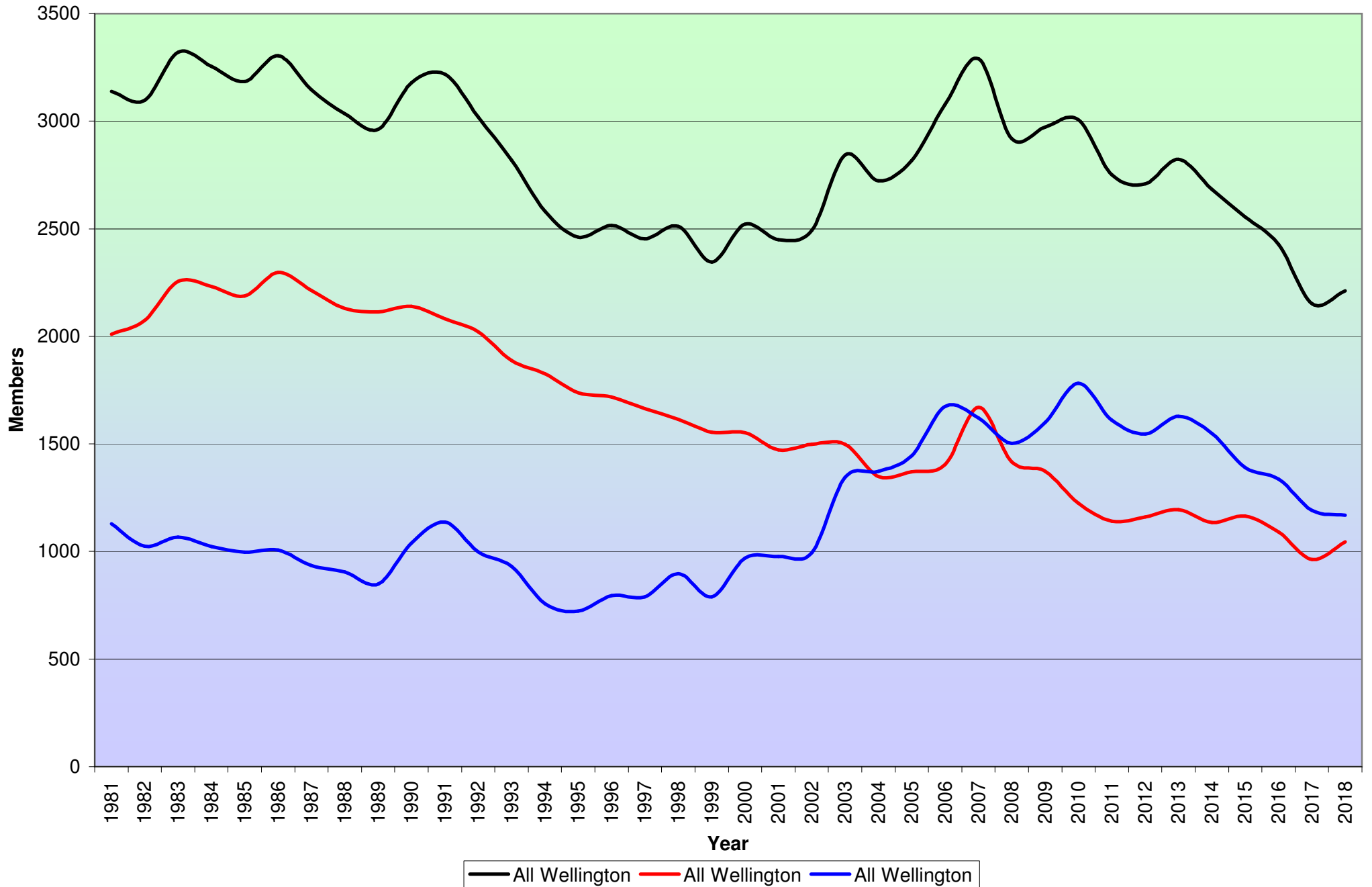
Total Affiliation - Wellington City Tennis Clubs



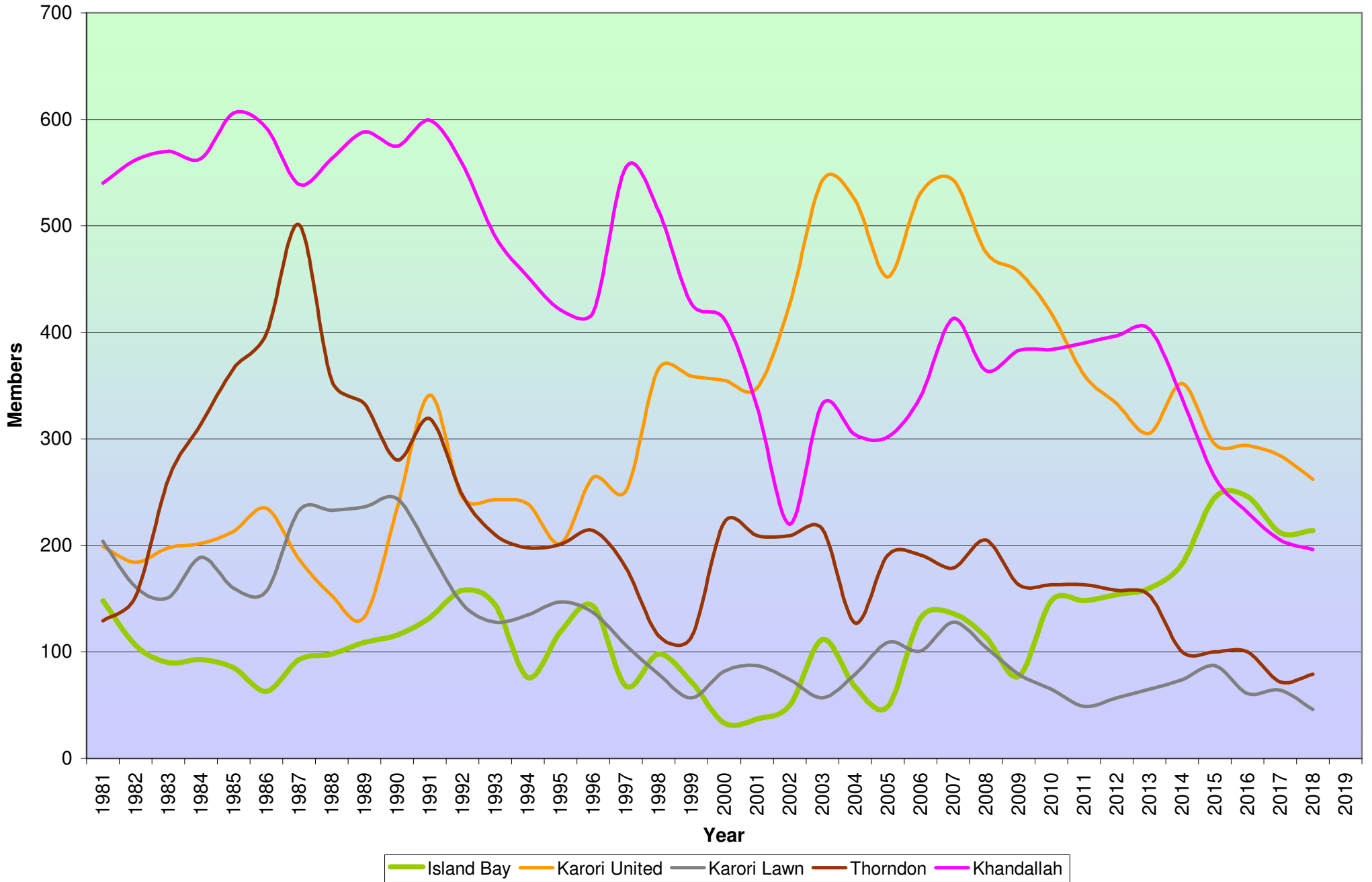
**Total Affiliation - Whanganui Tennis Clubs**



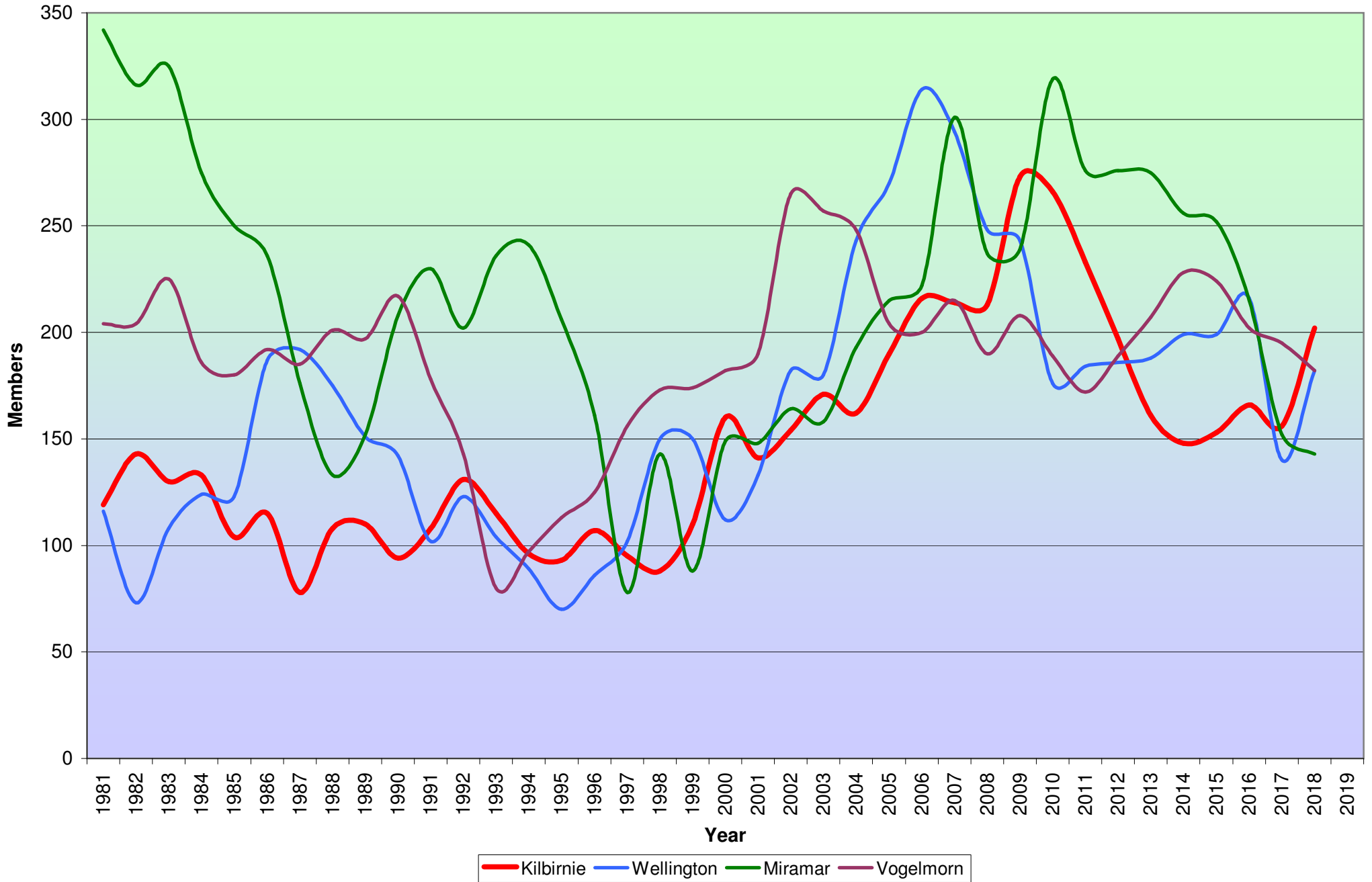
Total Affiliation - All Wellington City Tennis Clubs



Total Affiliation - Notable Wellington Tennis Clubs



Total Affiliation - South-Central Wellington Tennis Clubs



[Subscribe](#)[Past Issues](#)[Translate](#)

How three cricket clubs in Scotland are moving forward, becoming hubs for their communities

[View this email in your browser](#)



## How three cricket clubs in Scotland are moving forward, becoming hubs for their communities

Three years ago Cricket Scotland embarked on a ground-breaking programme designed to help their clubs to become more vibrant, visible and viable, called Thriving Clubs.

Funded by the International Cricket Council ('ICC') they engaged Sports Marketing Network ('SMN') to deliver Grow Your Club workshops and webinars and work on a one-2-basis with selected clubs.

The key selection criterion for clubs to become involved with the project was not size, nor league table position, but a willingness to change and move forward.

We have seen some great cases of cricket clubs across Scotland which have made some great strides forward and three of them presented their story at Cricket Scotland recent second club conference #MuchMoreThanCricket. You can find their presentations on SMN's website, but here is a summary of their stories:



### #MoreThanSport

2 days with keynotes, workshops, networking, and panel debates

Stadium MK, Milton Keynes  
4th – 5th July 2018

Book your place on  
#MoreThanSport Forum

#MoreThanSport Program

### Galloway Cricket Club "From acorn to oak tree"

Galloway is based in Gatehouse (pop. 1000) in a remote part of West Scotland. Their 'pavilion' was ramshackle, to say the least (see picture) but that did not deter the club from wanting to move forward. The club became involved with the Thriving Club programme and started a female section which became a key part of the club's development. (Note to all male-based sports clubs: a) 51% of the population is female b) clubs with a good gender balance tend to be nicer and more welcoming).

More female volunteer coaches accelerated the club's development and to raise the profile of the club they staged a 24-hour cricket match which certainly raised the profile and got new partners and sponsors involved. The club then won one of the awards in Cricket Scotland's new club awards: "Scotland's Most Welcoming Cricket Club" and the local Sports Council's Club of the Year Award.

Trips to a number of cricket festivals were arranged engaging both female and male players and a number of social events ensured that the club atmosphere was warm and vibrant. Although you could not say that the temperature was warm when the club ran its first beach cricket event. Not in June, but in October. As you can see from the photo, beach cricket in Scotland may be better staged in the summer!

After a long, hard slog the club was then successful in securing funding for a new pavilion which now forms the base for the club's aspirations to keep growing, remain diverse and a hub for the community.



### Galloway Cricket Club "From acorn to oak tree"

This club is based in Galashiels which is located in the Scottish Borders with a population of around 15,000. The club's ground enjoys a scenic location but the club was seen as being in the periphery of the community, a small playing base, little diversity amongst the membership and ageing facilities, to name some of the challenges facing the club.

The club got involved with the Thriving Club programme and decided that it wanted to become part of the community, as success off the field breeds success on it. They started to engage with 'bite-sized' volunteers and to think outside the box. They consulted with Cricket Scotland, clubs members and local businesses and created a five-year plan based around three themes: Community Engagement, Performance and Participation. Working groups covering these themes were set up, encouraging 'bite-size' volunteers to become involved.

A number of community engagement activities followed all bringing new people to the club and generating income: Sponsored dog walk, Tea in the Tent, first reunion in 14 years, social sixes event, Family Fun Day, Gala Day alongside the usual social events and making the club's facilities available for community events.

External funding was secured to improving facilities, including building female changing rooms.

Videos were being used to spread the word to the community, sponsors and partners.

Also, working with the local community regeneration group the club created a new shop front display in the town centre.

The club recognises that they are still on a long journey, but they have the confidence and clear plans. And, by the way, they have just won the Borders Sports Club of the Year Award!





**Westquarter & Redding Cricket Club -  
on the road to becoming a community club**

This Falkirk-based club was formed in 1908 and in 1995 sold its ground and bought a ground at a farm with a farmhouse, which required substantial repairs. The club had cash in reserves, but the crash in 2008 meant the interest paid did not generate sufficient capital.

Following discussions and soundings, it was decided to turn the farmhouse into a children's nursery and a commercial nursery opened in 2015 paying a rent that has now secured the financial future of the club.

Now was the time to consider the other aspects of the club's future and key was to build a thriving junior section by making it fun, promoting it, making it safe and engage the whole family...the Westies were born. Coaching sessions in local schools were set up, welcome meetings held and an online Welcome Pack was produced.

New practice nets were installed and cricket sets were to six primary schools.

The club then started to attract more adult members and raised its profile, securing sponsorship from the local Tesco Extra.

The club now has 12 volunteer coaches, parents are engaged and the club is becoming about much than just playing cricket. As with Gala CC the club is increasingly moving away from being run by a committee to involving 'bite-size' volunteers in project groups.

The club has now got the appetite for moving further forward and become a fully inclusive community hub.

So, the club is financially safe and a hub for its community...and has grown its membership from 40 to 140 in just two years. All through some simple baby steps.



Westquarter & Redding  
Cricket Club



Westies Welcome Pack  
2018

*"Scotland's Most Welcoming Cricket Club"*  
Cricket Scotland Awards 2016

"Our community sports clubs can adapt and move forward", says Svend Elkjaer of SMN.

"The incredible progress and success at these three cricket clubs in Scotland highlight that often it is simply by being innovative and enterprising our community sports clubs can become vibrant, visible and viable. They need to be inspired and motivated, and voila...there are off!

We should encourage our clubs to take some baby steps, involve local change-makers and get involved with their local communities. Not stis Falkirk fle them with policies and procedures!

***It CAN be done"***, ends Svend.

*To view the presentations from these remarkable club go here*

[Galloway Cricket Club "From acorn to oak tree"](#)  
[Gala Cricket Club - becoming a hub for the community](#)  
[Westquarter & Redding Cricket Club - on the road to becoming a community club](#)

---

***Bringing everybody together with an interest in raising the profile of the great work that sport is doing in our communities developing even better work and initiatives...learning from best practice both within and outside sport***

***This event is not about policies and strategies. It focuses on best practice and provides thoughts, tools and to-dos. It provides opportunities for successful providers to highlight capabilities. Real stories and successes are to be told, lessons to be learned, and ideas and experiences to be shared on how to create a more vibrant, visible and viable Sport for Good sector***

Book your place on #MoreThanSport Event

---

[!\[\]\(f1c5da15572e3e09d343161be98f508d\_img.jpg\) follow on Twitter](#) | [!\[\]\(2a30f8f4aa91bd6e751eede05a6a74ad\_img.jpg\) connect on LinkedIn](#) | [forward to a friend](#)